

CUSTOMER TECHNICAL MEMO # 150

Subject: Altitude APT56s Hollow Sill availability and Test Results

Date: 8/10/12

From: Product Development

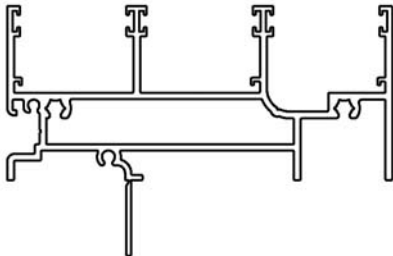
Please note APT56s Altitude Hollow Sill is available for order and new Test Data has now been released. Please refer to the Test Data page attached (this Test Data page will be added to the Altitude Tech Manual with our next update).

APT56s Altitude Hollow Sill * 6.5M

Mass: 1.899

AP: 688

PP: 450



The APT56s Altitude Hollow Sill can be found in the current Altitude Technical Manual dated May 2011 and on website drawings for your use.

If you have any questions please do not hesitate to contact your local ALSPEC Area Manager or Sales Office.

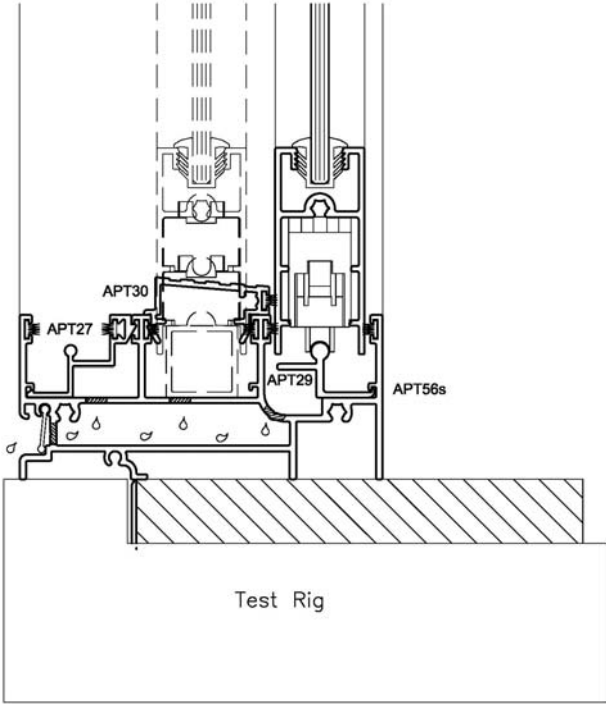
ALSPEC ALUMINIUM SYSTEMS
TECHNICAL MANUAL

ALTITUDE sliding door

TEST REPORT RESULTS

ALTITUDE SLIDING DOOR XO APT56s HOLLOW SILL, APT30 THRESHOLD, APT10/APT12 INTERLOCKS

Test sample size.....	2.125m high x 1.845m wide
Test report number.....	AS11-133
Serviceability load @l/150.....	+/-1.5Kpa
Ultimate load.....	+/-2.3Kpa
Water penetration.....	270Pa
Air infiltration	
@75Pa.....	+0.32 l/s/m ² -0.50 l/s/m ²
@150Pa.....	+0.53 l/s/m ² -0.74 l/s/m ²



DISCLAIMER
Please note that the test results shown above reflect specific configurations of a system and are representative only. If a specific high wind load or a different configuration (i.e changes to frames, transoms, mullions) is required on a project please discuss with ALSPEC prior to commencement